

# Hyde C.E. Primary School



Summer Term Newsletter No. 33  
14<sup>th</sup> June 2019



Hyde, Fordingbridge SP6 2QL

Tel: 01425 653350

[www.hyde.hants.sch.uk](http://www.hyde.hants.sch.uk)

## Dear Parents/Carers

### Sports Day

Hopefully by the time you read this newsletter our Sports Afternoon will have taken place. However, in the event of another postponement due to bad weather, the new date will be **Monday 8<sup>th</sup> July**. This had been the planned day for the Burgate Mini-Olympics but this event has now sadly been cancelled.

### Parent Governor Election

Thank you to everyone who voted in our recent Parent Governor Election and also to the two parents who put their names forward. The successful candidate was Mr Richard Holland, who will take up post at our next full governing body meeting on 8<sup>th</sup> July.

### Summer Show Tickets

Tickets are still available for the afternoon (2pm) performance of "Hard Times" on Thursday 11<sup>th</sup> July. The evening show has nearly sold out with only one ticket remaining.



### School Family Church Service

We hope you can join us for our Family Church Service next Thursday morning, 20<sup>th</sup> June. Refreshments will be available beforehand.

### New Forest School dates

**For Class 2 - Wednesday morning 19<sup>th</sup> June**

**For Class 3 - Monday morning 15<sup>th</sup> July**

Children should come to school in outdoor clothes and bring school uniform to change into later.

## This month's Diary Dates

(Yearly list over page. New dates added in bold).

### JUNE

- 13<sup>th</sup>: Class 1 Forest School – Year 2 morning, whole class afternoon**
- 17<sup>th</sup>: Classes 2 and 3 ~ Summer Show rehearsal at Ibsley Village Hall
- 18<sup>th</sup>: Classes 2 and 3 ~ Summer Show rehearsal at Ibsley Village Hall
- 18<sup>th</sup>: New Year R – Stay and Play (with parents), 9.15 – 10.30am
- 19<sup>th</sup>: Class 2 Forest School - morning**
- 19<sup>th</sup>: Year 6 - Winchester Cathedral Leavers' Service
- 20<sup>th</sup>: Family Service, 9.15am Hyde Church
- 20<sup>th</sup>: Class 1 Forest School – after Family Service, Year 2 am, whole class pm**
- 20<sup>th</sup>: Class 3 Greek Day (rearranged from 13<sup>th</sup> June)
- 21<sup>st</sup>: HSFA Summer Fair
- 24<sup>th</sup>: Classes 2 and 3 ~ Summer Show rehearsal at Ibsley Village Hall
- 24<sup>th</sup>: Class 1 visit to Portchester Castle
- 25<sup>th</sup>: Classes 2 and 3 ~ Summer Show rehearsal at Ibsley Village Hall
- 26<sup>th</sup>: New Year R – meet staff and buddies 9.15 – 10.30am
- 26<sup>th</sup>: Art Gallery open afternoon in school from 2.15pm
- 27<sup>th</sup>: Whole school photograph
- 27<sup>th</sup>: Class 1 Forest School – whole class afternoon**
- 28<sup>th</sup>: Classes 2 and 3 – Forest School

## Stars of the Week

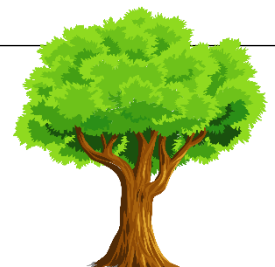


Class 3: **Isabel**

Class 2: **Natalia**

Class 1: **George**

*Our Stars of the Week are chosen by teachers in recognition of positive learning attitudes, positive behaviour or academic achievement.*



# Hyde C.E. Primary School



## Attendance

The current whole school attendance rate from the start of the school year to Friday 7<sup>th</sup> June is 95.32%.



## School Meals

The cost of school meals will go up by 10p to £2.40 from September 2019.

## In Your Child's Book Bag This Week:

- HSFA Raffle Tickets for Summer Fair (£1 per ticket and 20 tickets given per family)

Yours sincerely

Julie Dalziell  
Headteacher



## A message from the HSFA ~ Raffle Tickets for Summer Fair

Please look out for raffle tickets in book bags today (£1 per ticket in books of 5 tickets). Please sell to friends and family, or **return unused tickets to the school office**. More tickets are available from the school office, and to purchase on the day. Raffle will be drawn at approx. 5.30pm on the day of the fair.

Please check your child's book bag on a daily basis for Accident/Illness report slips.

*From time to time, we send out details of out of school clubs and activities. Although we have taken all reasonable steps to ensure the validity and safety of these activities and/or services, we cannot guarantee their quality. Inclusion of any provider does not imply a recommendation or endorsement by Hampshire County Council. Parents/carers/persons with parental responsibility and/or participants should make their own enquiries as to its suitability or purpose.*

## DATES 2018-19

*(These are the initial list of dates for the year ahead. This will be added to regularly so please read the newsletter carefully each week. New dates will be added in bold type. You can also check the calendar on the school website.)*

### JUNE

- 13<sup>th</sup>: **Class 1 Forest School – Year 2 morning, whole class afternoon**  
17<sup>th</sup>: Classes 2 and 3 ~ Summer Show rehearsal at Ibsley Village Hall  
18<sup>th</sup>: Classes 2 and 3 ~ Summer Show rehearsal at Ibsley Village Hall  
18<sup>th</sup>: New Year R – Stay and Play (with parents), 9.15 – 10.30am



**Reminder ~ HSFA Summer Fair is next Friday, 21<sup>st</sup> June, at 3pm on the Common!**



# Hyde C.E. Primary School



## DATES 2018-19 (continued)

*(These are the initial list of dates for the year ahead. This will be added to regularly so please read the newsletter carefully each week. New dates will be added in bold type. You can also check the calendar on the school website.)*

### JUNE

- 19<sup>th</sup>:** **Class 2 Forest School - morning**  
19<sup>th</sup>: Year 6 - Winchester Cathedral Leavers' Service  
20<sup>th</sup>: Family Service, 9.15am Hyde Church  
**20<sup>th</sup>:** **Class 1 Forest School – after Family Service, Year 2 morning, whole class afternoon**  
20<sup>th</sup>: Class 3 Greek Day (rearranged from 13<sup>th</sup> June)  
21<sup>st</sup>: HSFA Summer Fair  
24<sup>th</sup>: Classes 2 and 3 ~ Summer Show rehearsal at Ibsley Village Hall  
24<sup>th</sup>: Class 1 visit to Portchester Castle  
25<sup>th</sup>: Classes 2 and 3 ~ Summer Show rehearsal at Ibsley Village Hall  
26<sup>th</sup>: New Year R – meet staff and buddies, 9.15am – 10.30am  
26<sup>th</sup>: Art Gallery open afternoon in school from 2.15pm  
27<sup>th</sup>: Whole school photograph (rescheduled from 13<sup>th</sup> June)  
**27<sup>th</sup>:** **Class 1 Forest School - whole class afternoon**

### JULY

- 1<sup>st</sup>: Classes 2 and 3 ~ Summer Show rehearsal at Ibsley Village Hall  
2<sup>nd</sup>: Year 5 Taster Day at Burgate School – Year 5 only  
**3<sup>rd</sup>:** **Class 1 Forest School – Year 2 morning, whole class afternoon**  
3<sup>rd</sup>: Classes 2 and 3 ~ Summer Show rehearsal at Ibsley Village Hall  
4<sup>th</sup>: Classes 2 and 3 ~ Summer Show rehearsal at Ibsley Village Hall  
4<sup>th</sup>: New Year R morning in school, 9.15 -11.30am  
5<sup>th</sup>: Year 6 Burgate Induction Day  
5<sup>th</sup>: Classes 2 and 3 – Forest School  
5<sup>th</sup>: End of Year Reports sent home  
5<sup>th</sup>: HSFA Party in the Paddock (revised from Gin Tasting)  
**8<sup>th</sup>:** **Rearranged Sports Day (postponed from 14<sup>th</sup> June)**  
9<sup>th</sup>: Classes 2 and 3 ~ Summer Show rehearsal at Ibsley Village Hall (Technical Rehearsal)  
9<sup>th</sup>: New Year R morning in school, 9.15 – 11.30am  
10<sup>th</sup>: Classes 2 and 3 ~ Dress Rehearsal for Summer Show at Ibsley Village Hall  
11<sup>th</sup>: Classes 2 and 3 at Ibsley Village Hall  
11<sup>th</sup>: Summer Show, 2pm and 7pm performances at Ibsley Village Hall  
12<sup>th</sup>: Classes 2 and 3 – Forest School  
**15<sup>th</sup>:** **Class 3 Forest School - morning**  
15<sup>th</sup>: Messy Church, 3.30 – 5pm on the cricket pitch  
18<sup>th</sup>: Year 6 Leavers' Service 10am, Hyde Church  
19<sup>th</sup>: School closes for summer holiday  
22<sup>nd</sup>: INSET Day 4  
23<sup>rd</sup>: INSET Day 5