

Murder Mystery 2

At 9am, when the maid knocked on the door of Lady Bilkington's room in the Hiltraffles Hotel, there was no reply.



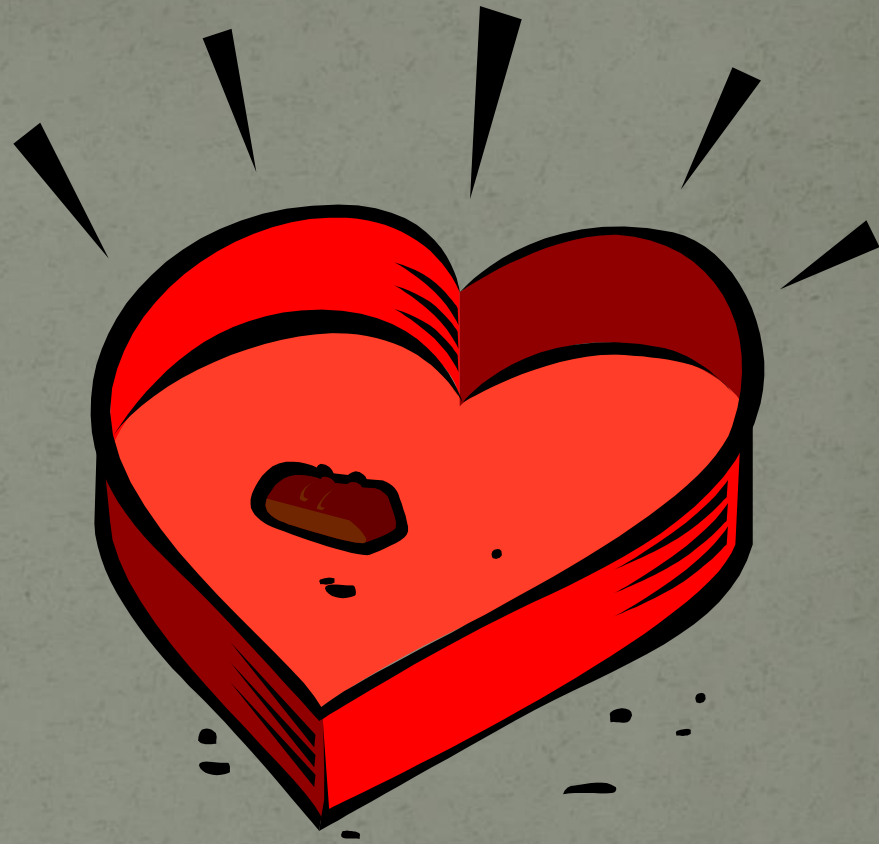
She had asked for breakfast in bed and a few minutes later, the manager opened the door. Lady Bilkington was lying dead in her bed.



Beside her was a half drunk cup of cocoa which smelt rather odd. Later tests revealed this was poisoned.



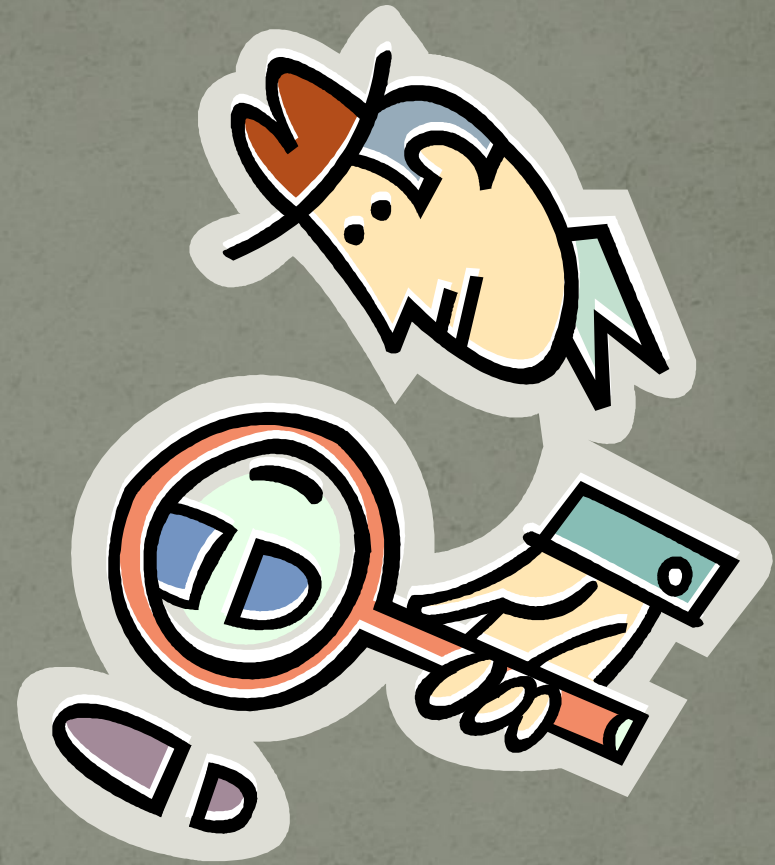
Her jewellery case
containing the
Bilkington
diamonds was
empty.



The waitress who had served the evening cocoa was nowhere to be seen. Her body was found in her room – she had been shot.



The police were now looking for the mastermind behind this and the diamonds.



The waitress, not entirely trusting the mastermind, had left hidden in her room, 6 clues in code. The first five give helpful facts about the murderer and the 6th clue reveals where the diamonds are.




There are 32 suspects.
Each clue eliminates
half of the suspects.
Can you find the
murderer and the
place where the
diamonds are hidden?



In clues 1,3 & 4: A=1, B=2 etc

For help with certain clues,
click on the selected arrow.

Clue 2 

Clue 3 

Clue 5 

Answers 

Clue 2

Here is the first line done. Mark off the lines of symmetry for each letter then working from left to right look for the numbers.

121110

0	1	0	0	2	0	0	1	0	0	1	0	1	1	1	0
Z	T	S	R	H	P	Q	E	F	J	M	N	U	W	X	R

back to clues page



Clue 3

Most of these sequences are straight forward apart from:

7) square numbers

8) prime numbers

10) Fibonacci

13) prime numbers

14) doubling

17) doubling

[back to clues page](#)



Clue 5

Try the 3 x 12 grids.

back to clues page



Stop! Answers coming up.



Clue 1

The poisoner has no freckles

Clue 2

0	1	0	0	2	0	0	1	0	0	1	0	1	1	1	0
Z	T	S	R	H	P	Q	E	F	J	M	N	U	W	X	R

2	0	1	0	1	1	1	0	0	0	1	1	1	0	1	2
I	J	D	S	E	Y	W	R	Q	P	E	C	A	R	T	I

1	0	1	0	1	8	2	1	0	8	0	1	1	2	1	0
E	S	C	G	A	O	I	E	L	O	L	D	B	I	E	L

1	8	1	8	0	0	1	1	0	1	0	1	1	2	0	0
E	O	A	O	F	R	D	E	P	D	L	W	D	I	K	J

0	1	1	0	0	2	1	0	0	2	0	1	0	0	1	1
Q	E	T	S	P	H	E	F	P	I	R	M	P	J	E	T

Birds and mammals are warm blooded – all others are cold blooded.

Clue 3

The murderer is left handed

Clue 4
The killer rides a motorbike

Clue 5

The murderer educated at an all boys
school

TDL/HUL/ECB/MAO/UTY/RES/DDS/EAC
/RTH/EAO/RNO/EAL

T	H	E	M	U	R	D	E	R	E	R	E
D	U	C	A	T	E	D	A	T	A	N	A
L	L	B	O	Y	S	S	C	H	O	O	L

Clue 6

Diamonds in toilet cistern

click

